

Opening Controller and removing the cards.



Figure 1: End view of controller box

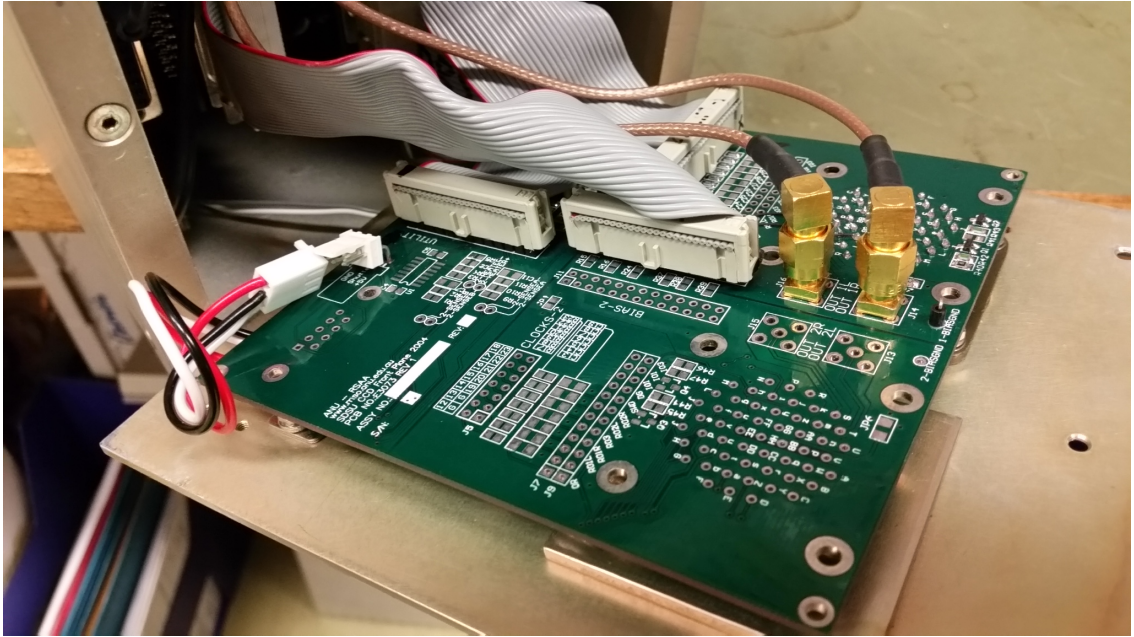


Figure 2: End open and folded down.

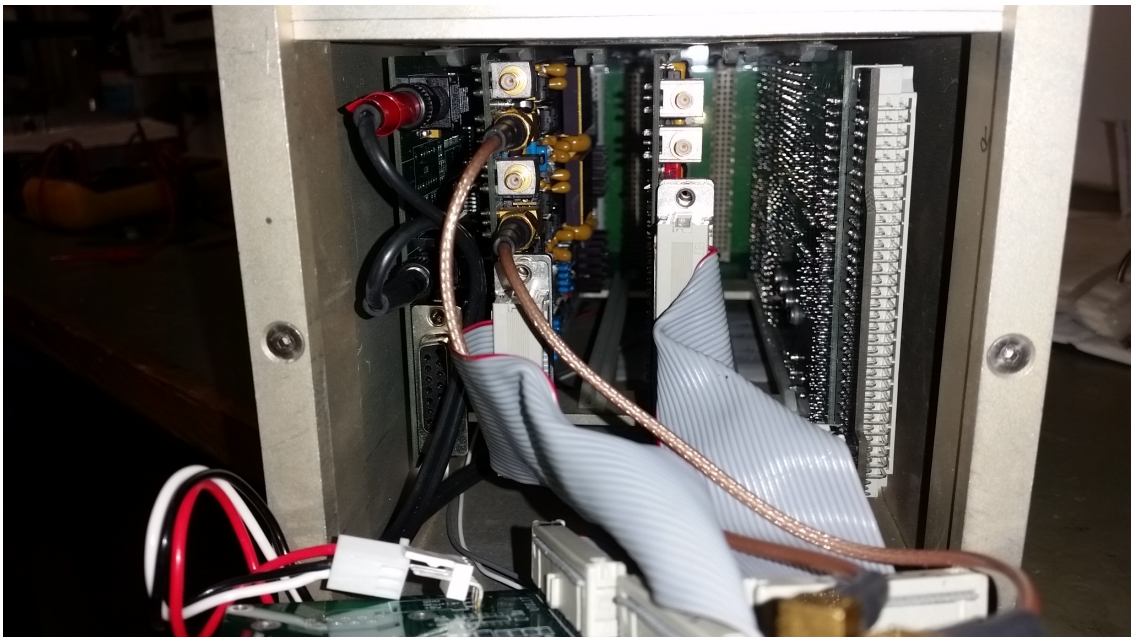


Figure 3: End view showing card layout and connectors





Figure 4: End view showing card layout and connectors



Figure 5: Timing Board component side

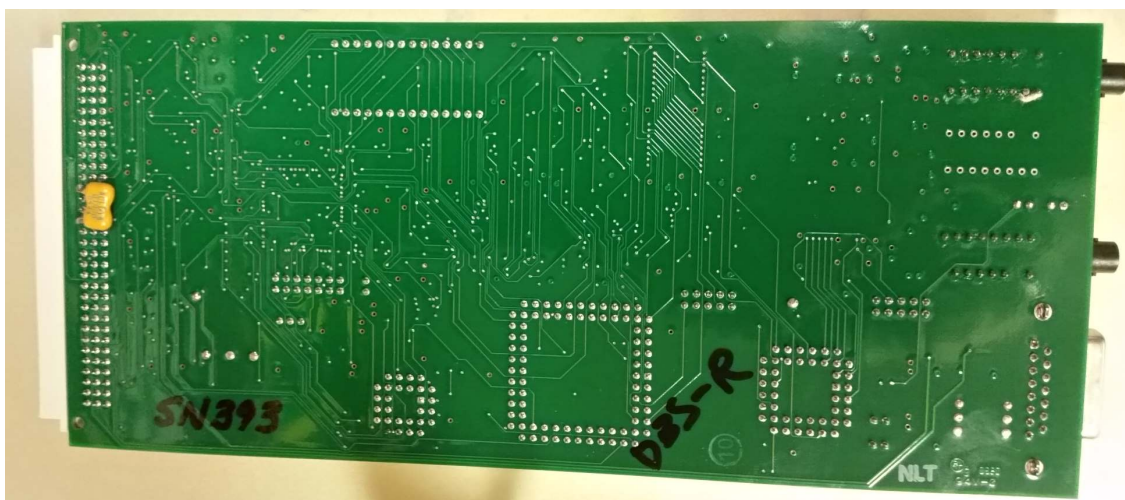


Figure 6: Timing Board backside



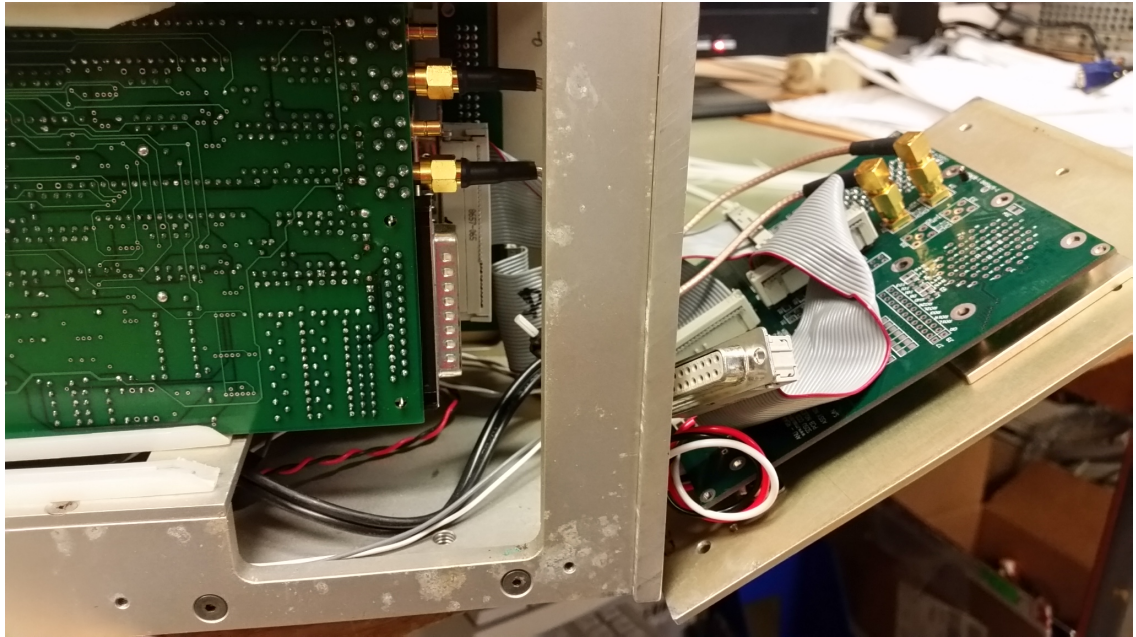


Figure 7: Video board in box

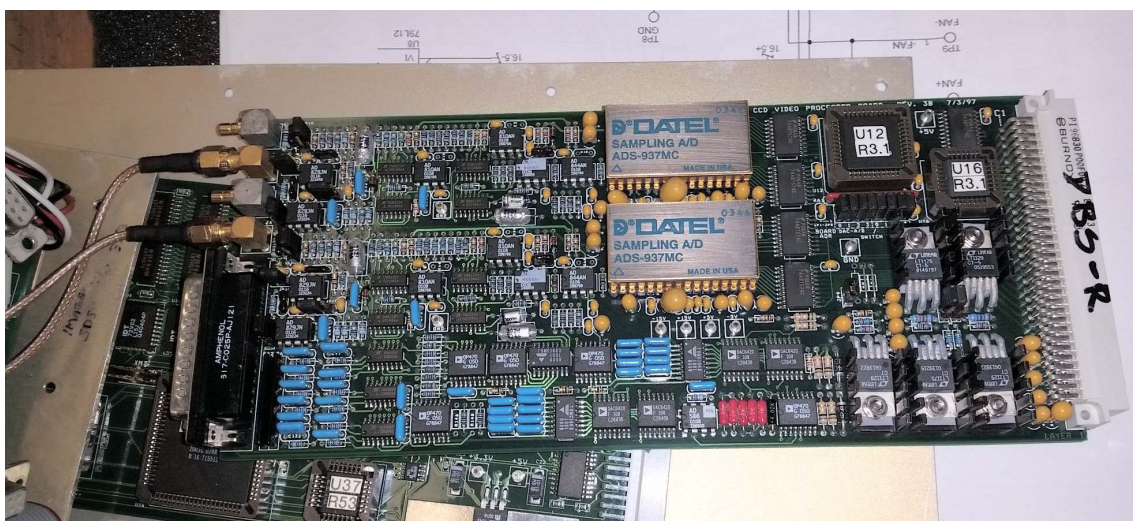


Figure 8: Video Board component side



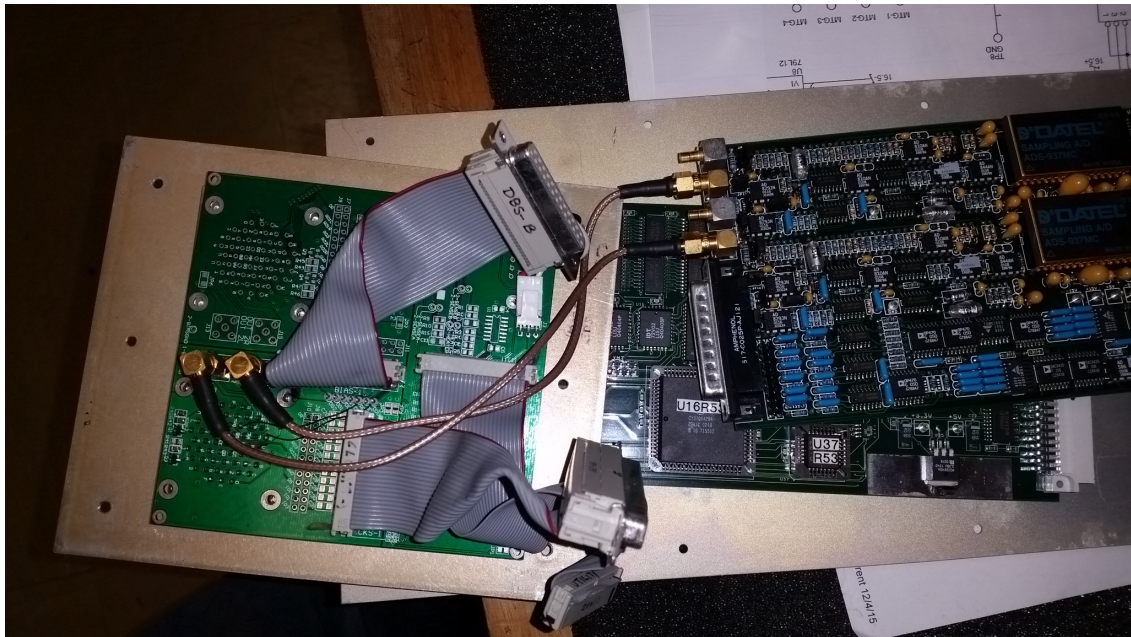


Figure 9: Video board connections to end plate

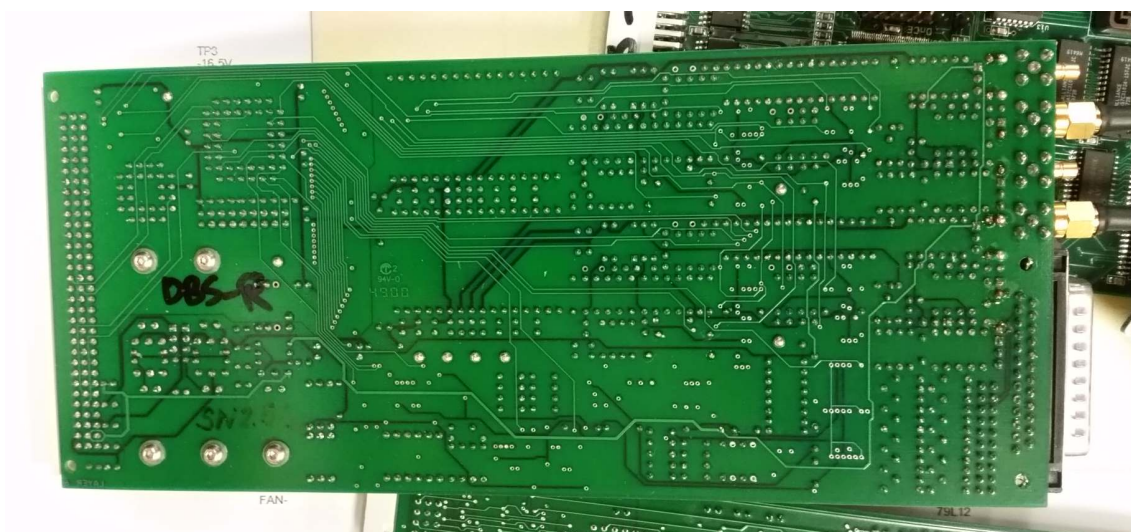


Figure 10: video Board backside



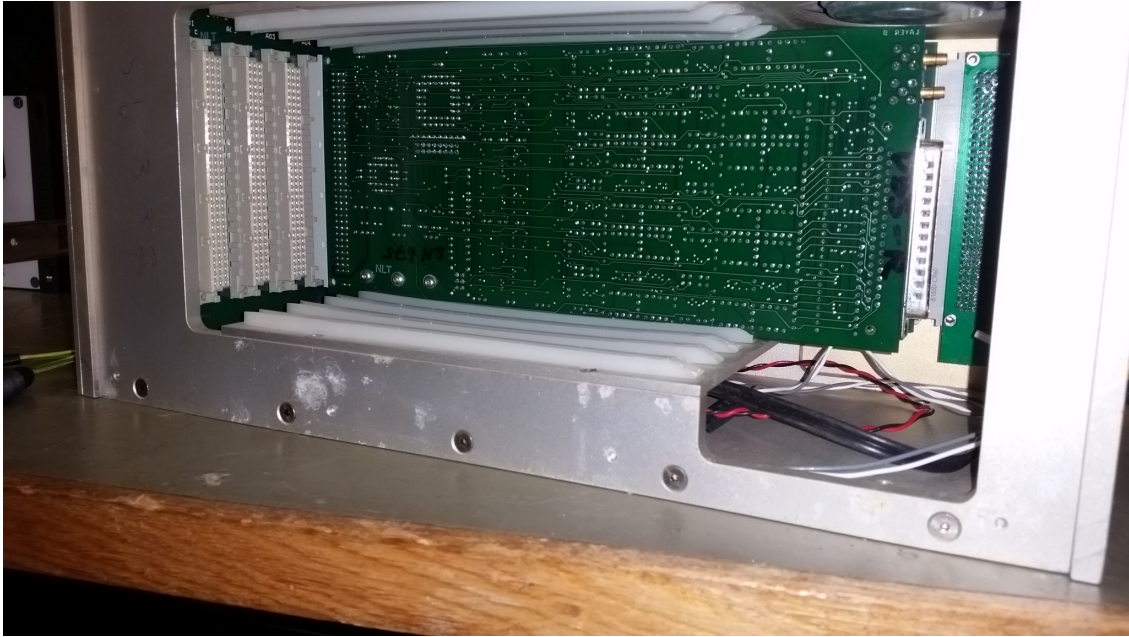


Figure 11: Clock board in backplane



Figure 12: Clock Board component side

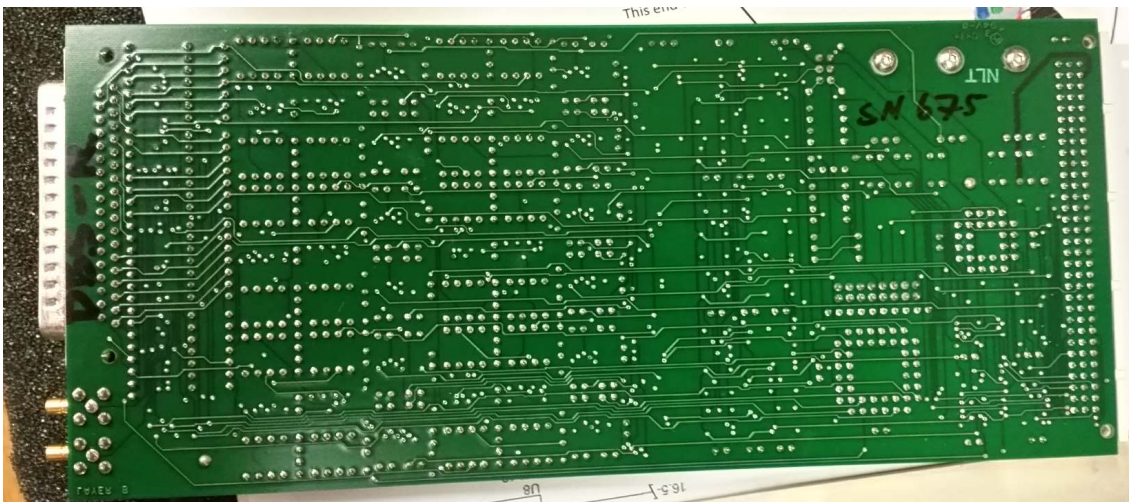


Figure 13: Clock Board component side





Figure 14: Utility Board in backplane

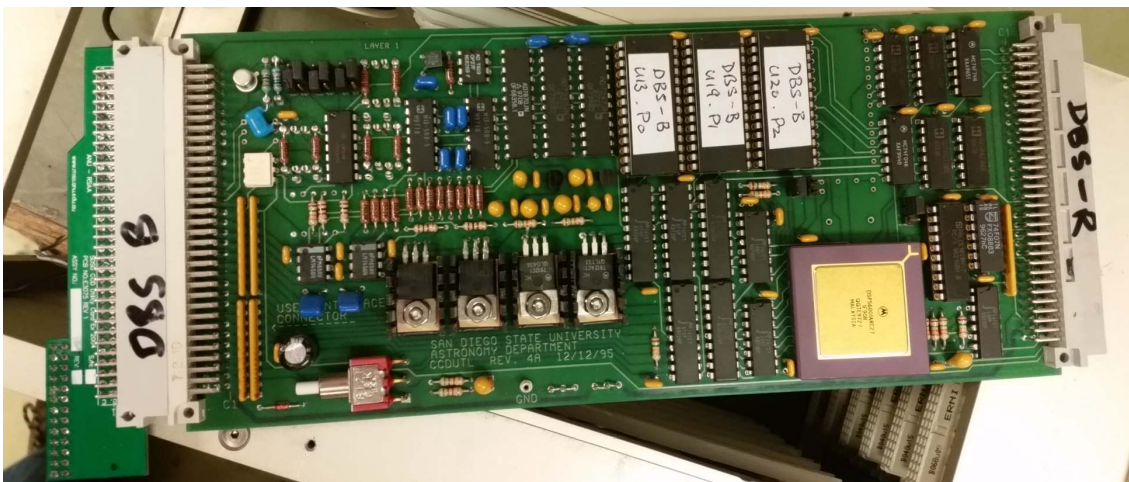


Figure 15: Utility Board component side

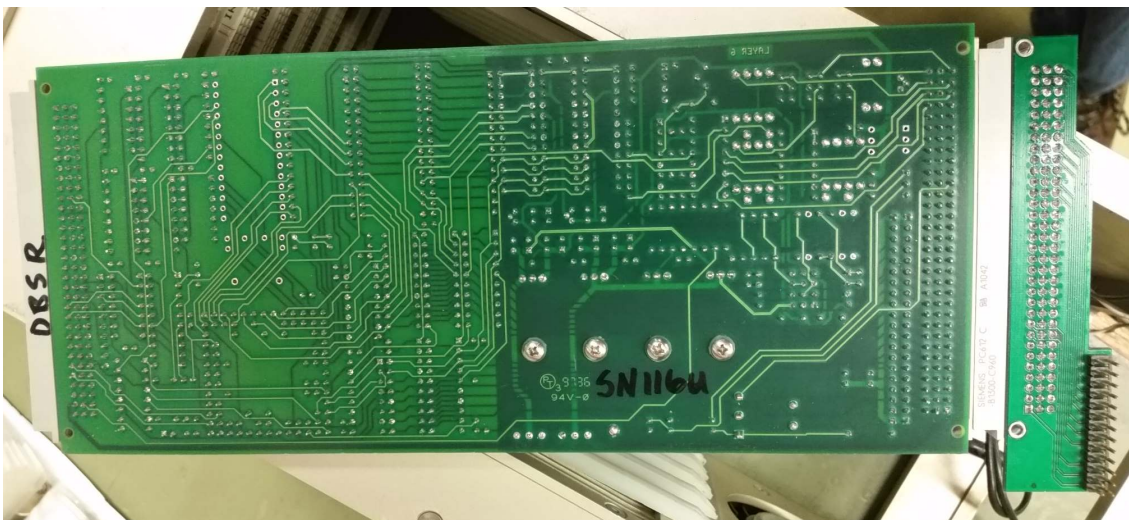


Figure 16: Utility Board backside



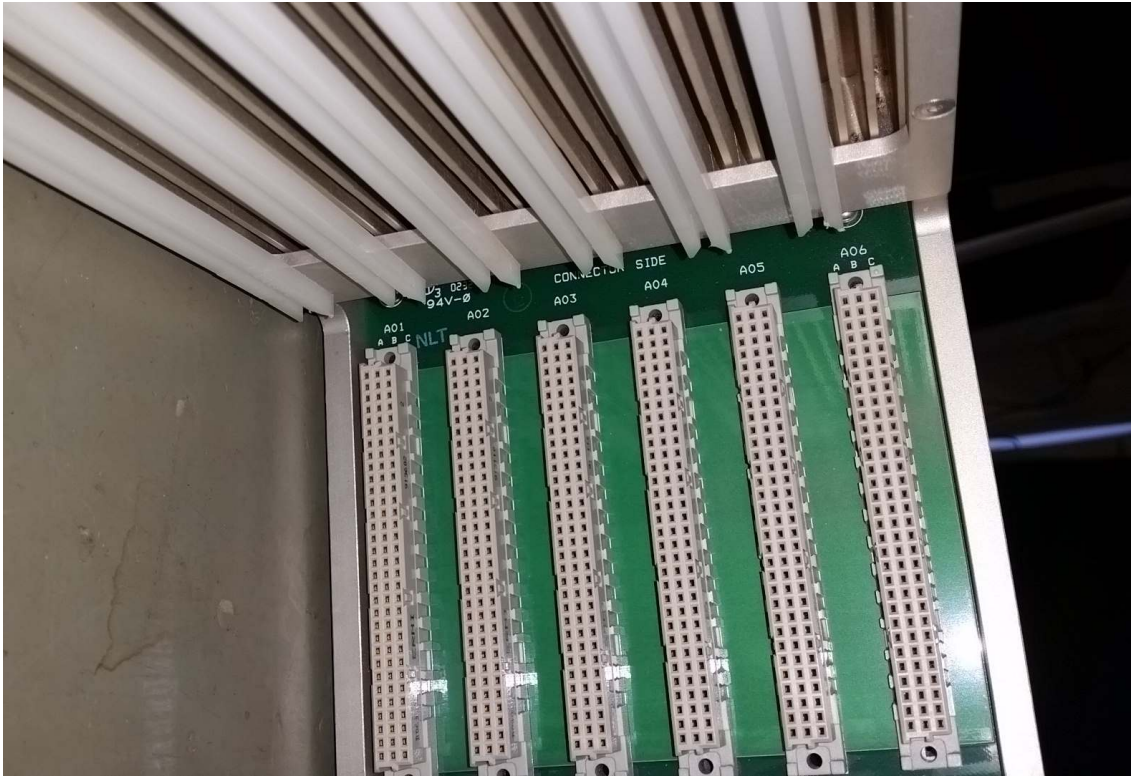


Figure 17: SDSU backplane



Figure 18: SDSU fan position